

# vessels of the heart

Vessels are what connect the and deliver the blood in order to reach and exit the heart. All vessels connect to the chambers within the heart. There are vessels for oxygenated and deoxygenated blood.

## right side

### *pulmonary vein*

- Although a vein, it carries oxygenated blood instead of deoxygenated blood
- Connects to heart through left atrium
- Returns oxygenated blood from lungs to heart
- Systemic circulation

### *vena cava*

- Two of these; superior (top) and inferior (bottom)
- Both connect to right atrium
- Returns deoxygenated/used blood from body back to heart
- Pulmonary circulation

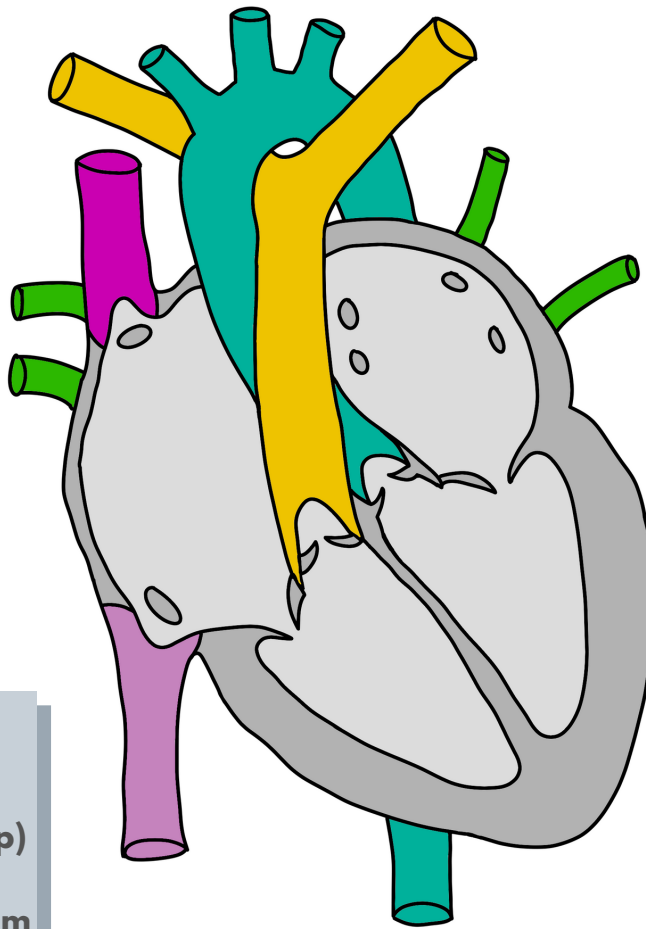
## left side

### *aorta*

- Largest artery in body
- Delivers blood in multiple directions
- Starts & connects from the left ventricle
- Systemic circulation

### *pulmonary artery*

- Although an artery, it carries deoxygenated blood instead of oxygenated blood
- Connects to the heart through the right ventricle
- Returns deoxygenated blood from heart to lungs to be processed
- Pulmonary circulation



\*remember that diagrams may seem flipped directionally, as they are labelled using the outside point of reference, just like it would face you for inspection\*