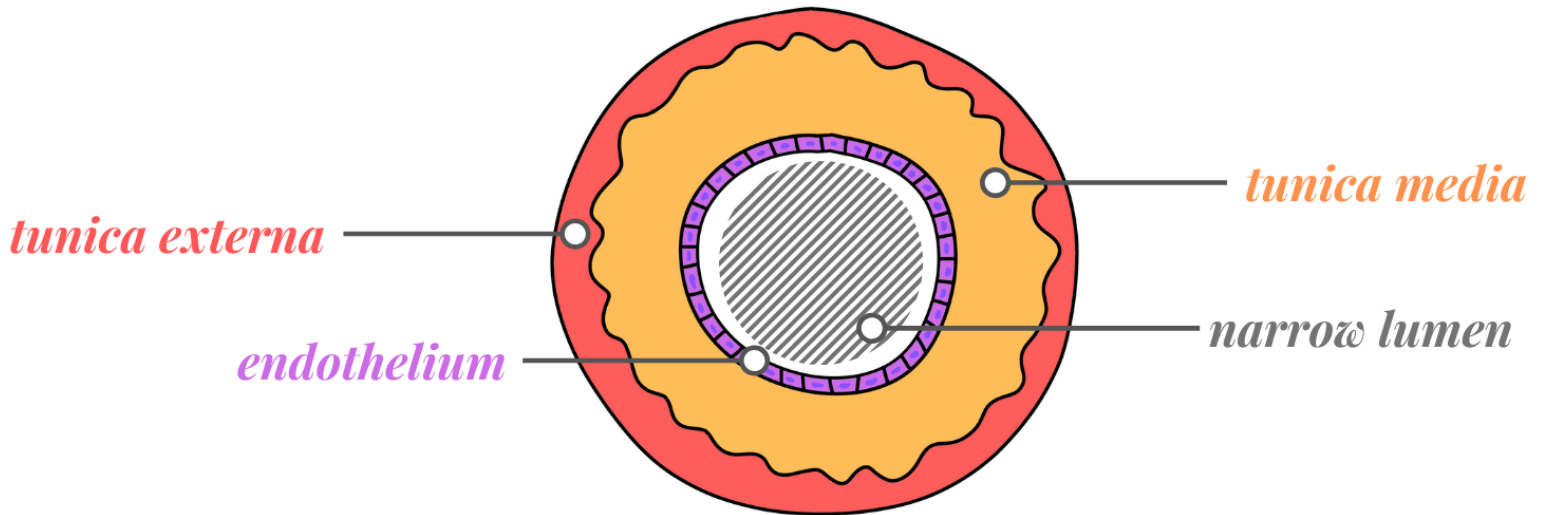


# structure of arteries

Arteries carry oxygenated blood for systemic circulation in the heart. They carry blood from the heart to the body. It delivers blood in a high pressure environment.



## *tunica externa*

- Outermost layer of artery
- Collagen and connective tissue
- Keeps artery intact
- Heart won't rupture thanks to this layer

## *tunica media*

- Middle layer of artery
- Elastic fibres and muscle in this layer
- Can stretch and contract easily, and muscles keep it rigid and solid

## *endothelium (tunica interna)*

- Innermost layer of artery
- Monolayer of endothelial cells
- Regulate exchanges between blood & surrounding tissue
- Is barrier between vessel & blood

## *narrow lumen*

- Space in the center of artery
- Is what allows for artery to have high blood pressure

\*diagram not to scale nor in proper proportion to one another\*