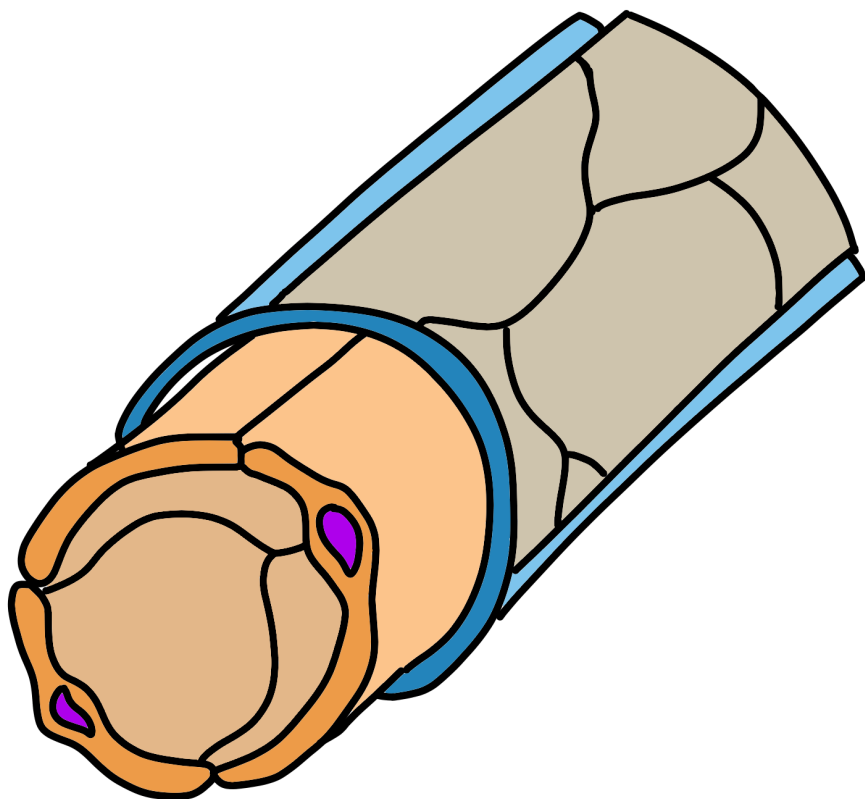


capillaries: the three variations

The capillaries have three different versions of itself which are used in different parts of the body for specific functions. Each capillary specializes its function through the shape its vessel has.

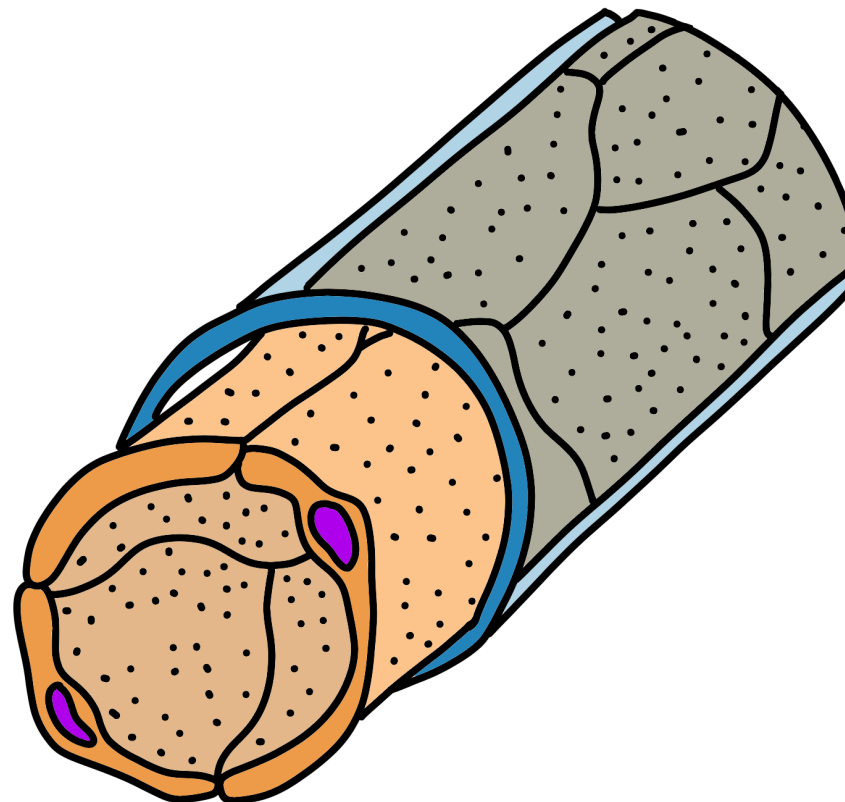
continuous

- Unbroken epithelial & basement membrane
- Selective of what passes through
- Larger molecules cannot pass
- Smaller molecules can pass



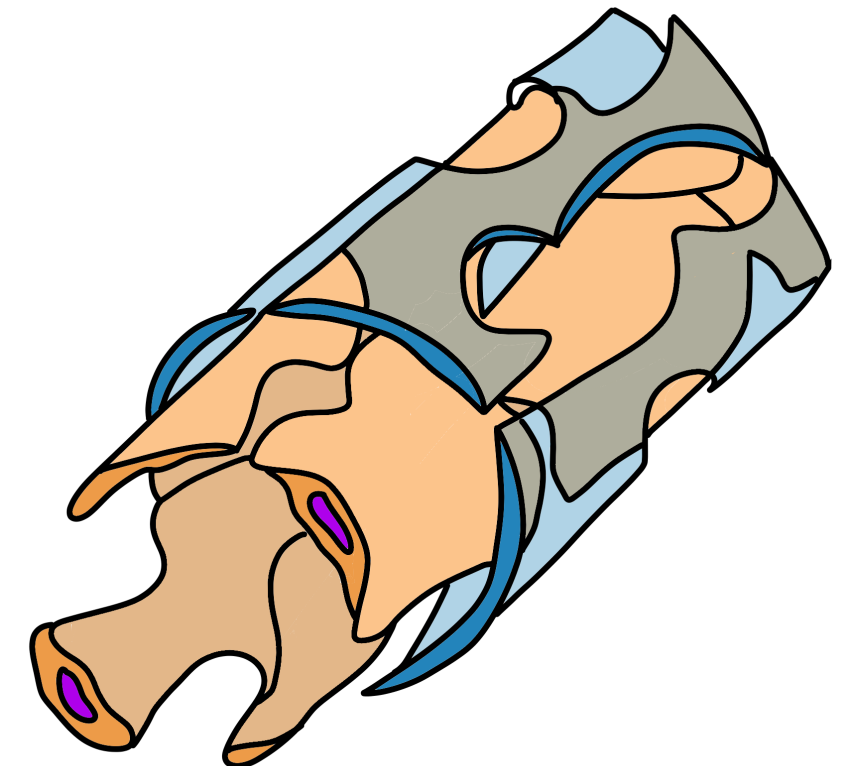
fenestrated

- Pores in endothelial layer
- Unbroken, smooth basement membrane
- Pores allow for plenty of materials to pass



sinusoid

- Intercellular gaps in endothelial layer
- Incomplete basement membrane
- Gaps are larger than fenestrated pores
- Allows larger molecules to pass



diagrams not to scale

created by emi matsumae,
for the daily dosage

