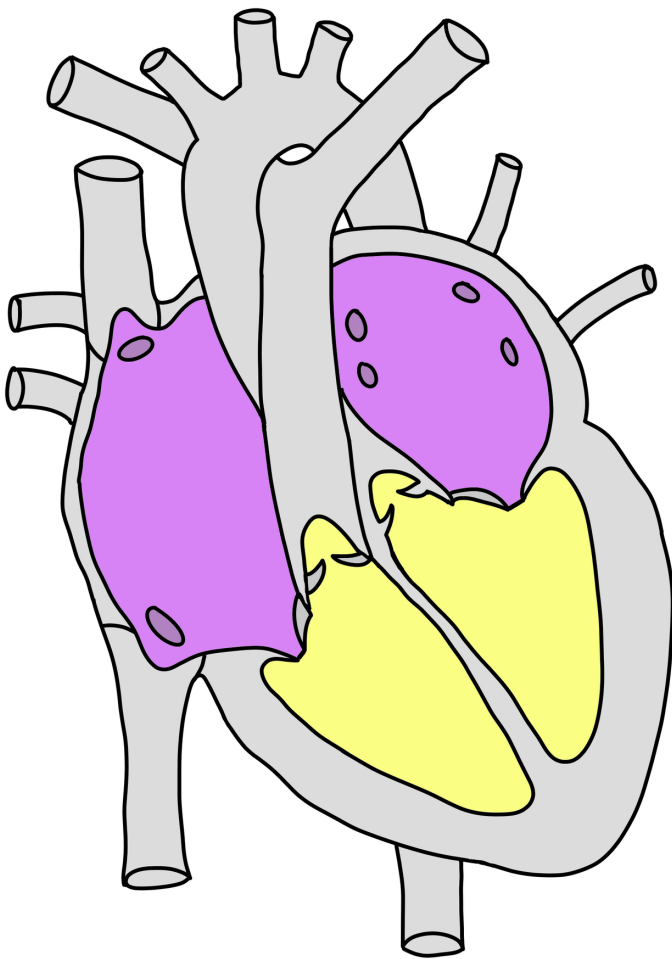


double-pump system

The two chambers in the heart are:

- **Atria**
- **Ventricles**



Atria

THE UPPER CHAMBERS

- These chambers are much smaller than the ventricles
- Directly collects blood that enters heart from lungs and the body
- First place that blood goes to once reaching the heart through vessels

Ventricles

THE LOWER CHAMBERS

- These chambers are bigger than the atria
- Right under and connect to the atria
- Pumping of the blood occurs here

**There are a total of four different chambers.
Two are atria and another two are ventricles.
There is one of each chamber for each double-pump
system of the heart (systemic & pulmonary).**