

adh & water reabsorption

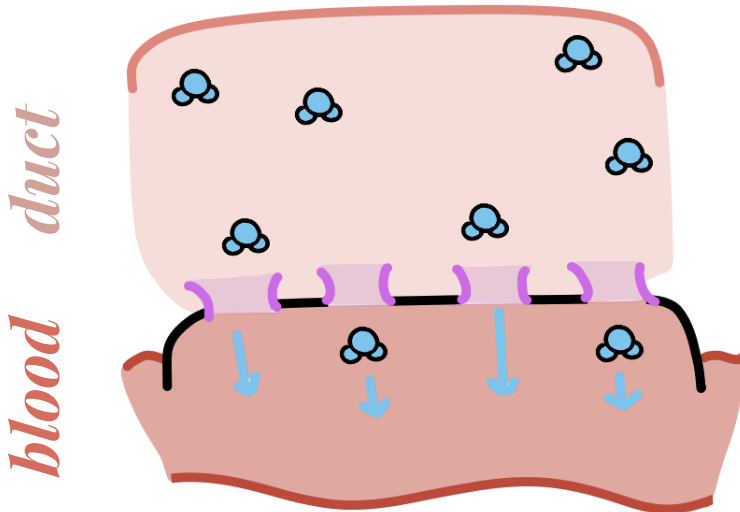
ADH is a hormone that opens the pores in the kidney's membrane. When dehydrated, an increase of ADH is noted, in order to help reabsorb any water in the blood for the body to use. With the membrane's increased permeability, water can be better retained, and not go to waste, as a dehydrated body will require and utilize that water to function.

Where: The Collecting Duct

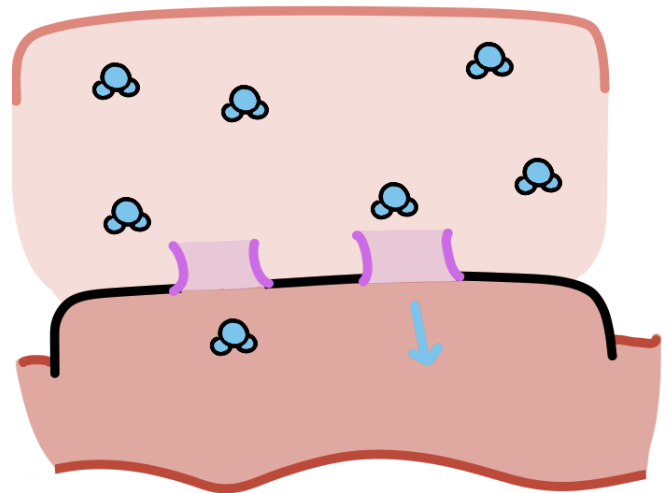
aquaporins opened by adh

h₂o

dehydrated body



hydrated body



- Not enough water
- ADH is produced
- Makes aquaporins open up = permeable to water
- More entry ways for water to go back to blood
- Water is conserved

- Enough/excess of water
- ADH is not produced
- Less aquaporins = not as permeable to water
- Less entry ways for water to go back to blood
- Water is peed out

diagram not to scale nor in proper proportion to one another