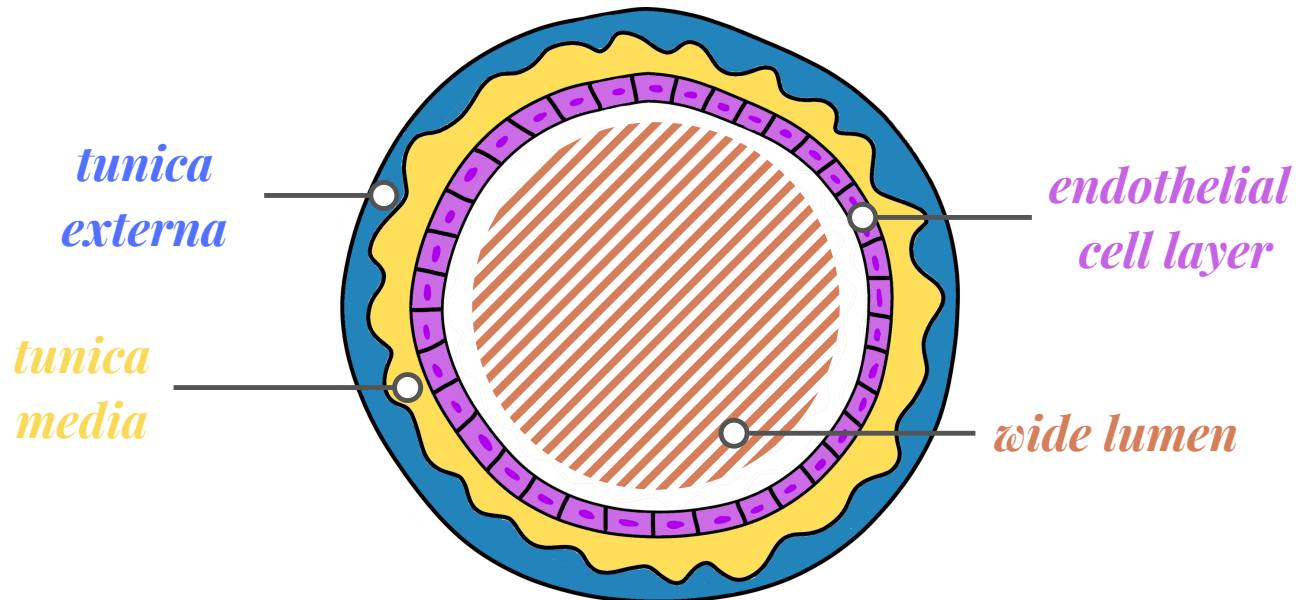


# structure of veins

**Veins carry deoxygenated blood for pulmonary circulation in the heart. They carry blood from the body to the heart. It delivers blood in a low pressure environment.**



## *tunica externa*

- Outer layer of the vein
- Made of collagen and connective tissue
- Keeps veins intact

## *tunica media*

- In the middle between inside and outside layers
- This layer is very thin in size
- Made of muscle and elastin

## *endothelial cell layer*

- Innermost layer of the vein
- Barrier between blood and vessels
- Monolayer of endothelial cells
- Permeable membrane for material exchanges

## *wide lumen*

- Blood is able to flow with low pressure
- Maximization of blood flow for effective blood return

*\*diagram not to scale nor in proper proportion to one another\**