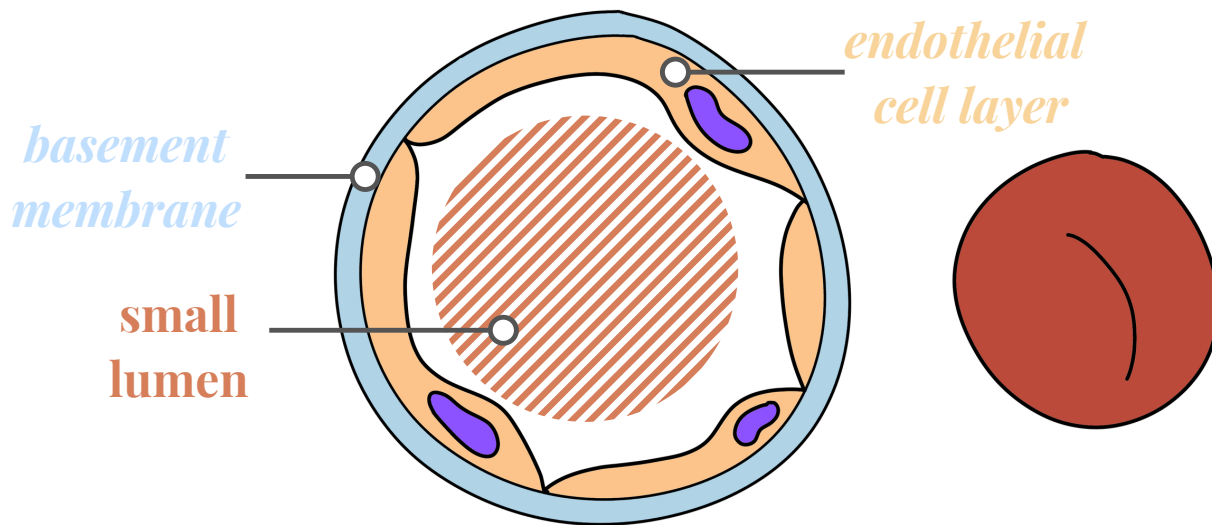


structure of capillaries

Capillaries carry both oxygenated and deoxygenated blood. They carry blood in a low pressure environment. Capillaries are the transition between arteries and veins.



basement membrane

- Outermost layer of capillary
- Permeable layer
- Allows materials to difuse through

endothelial cell layer

- Layer that is one cell thick
- Regulate exchanges between blood & surrounding tissue
- Is barrier between vessel & blood

small lumen

- Is one blood cell wide
- Allows one cell at a time to pass through
- Maximum and optimal material exchange

diagram not to scale nor in proper proportion to one another